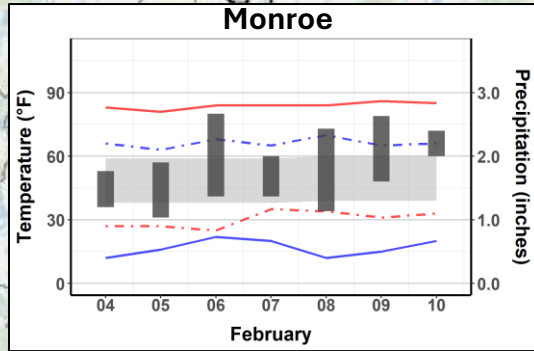
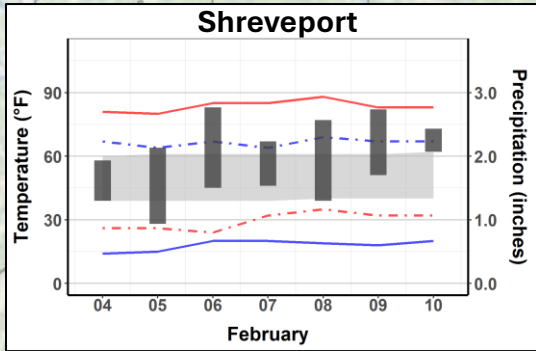




LOUISIANA WEEKLY CLIMATE SUMMARY

Volume 2, Issue 06

February 04 – February 10, 2026



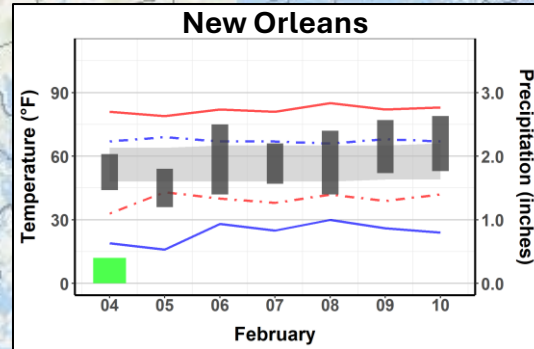
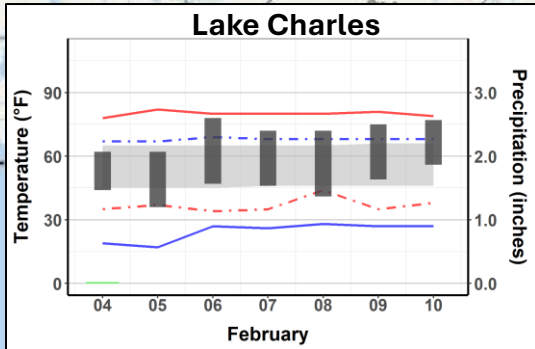
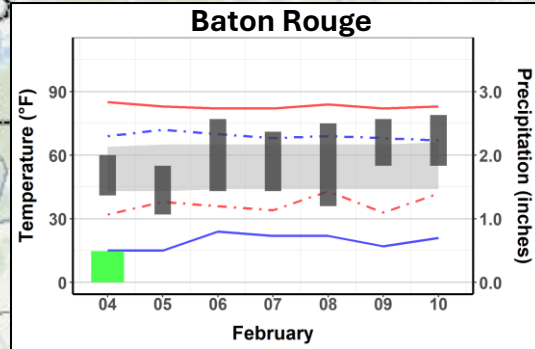
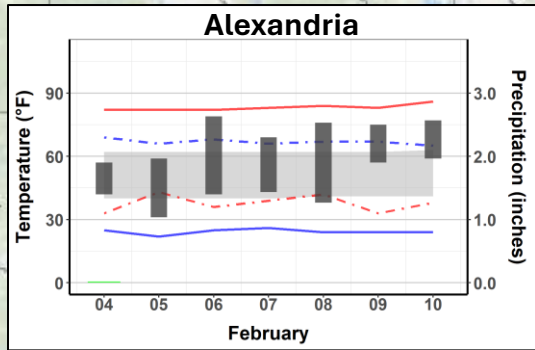
Daily Ranges

- Max/ Min Temps
- Max/ Min Normal

Daily Extremes

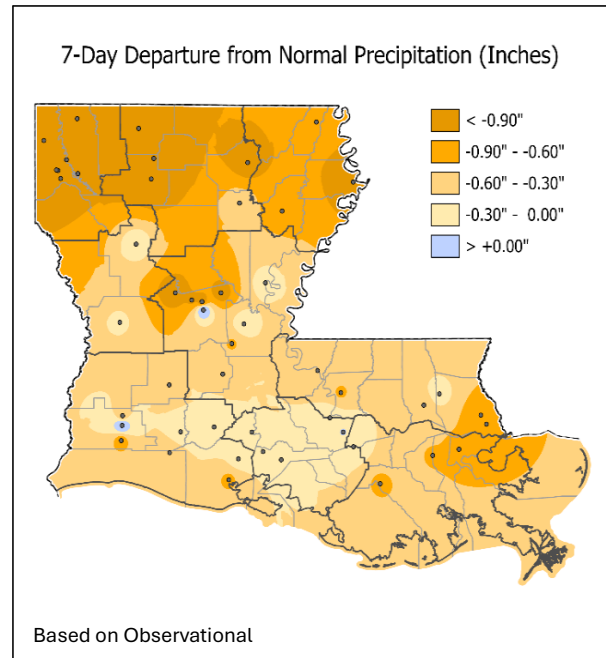
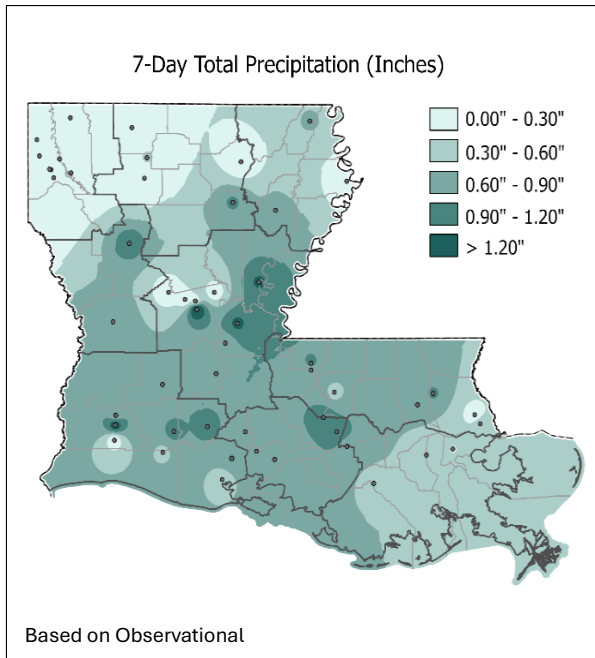
- Record High Max
- Record High Min
- Record Low Max
- Record Low Min

Rainfall

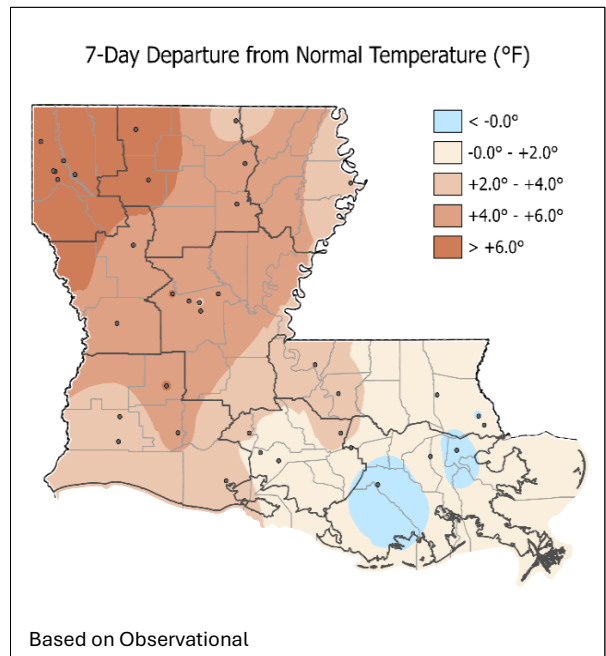
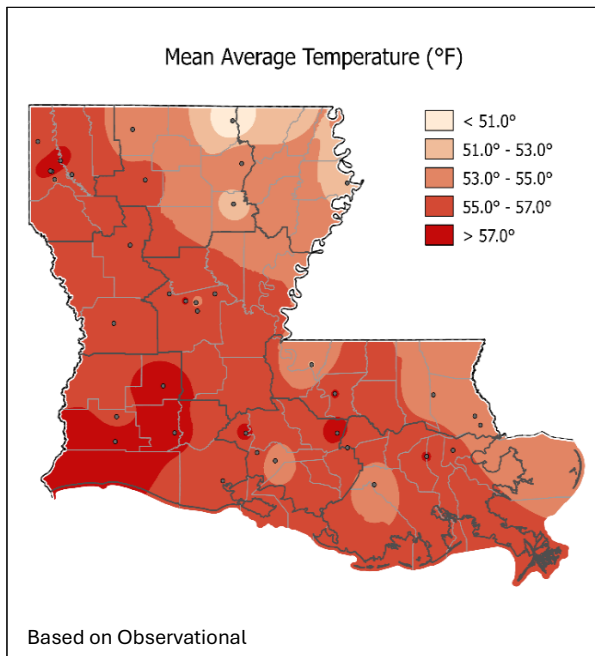


* PROVISIONAL DATA

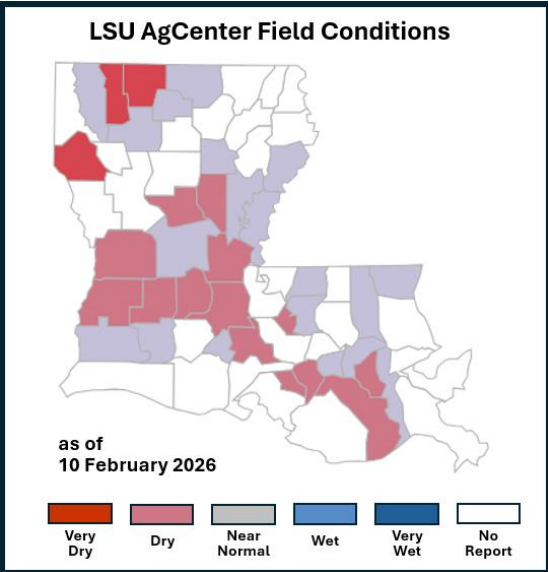
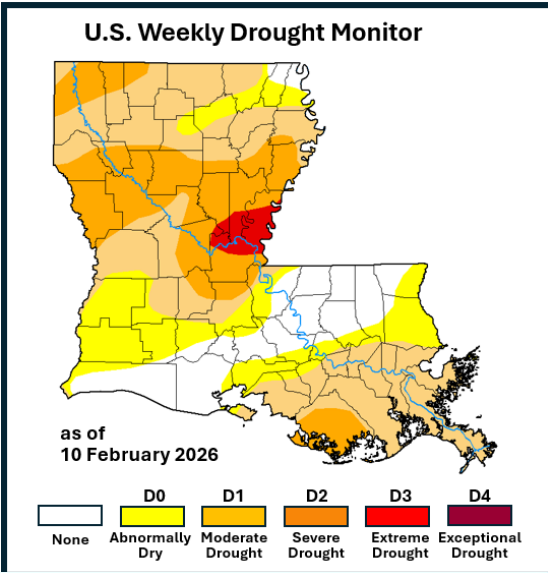
7-Day Accumulated Rainfall & Average Temperatures: 04 – 10 Feb 2026



- it was a drier-than-normal 7-day period across the Pelican State as high pressure dominated after a frontal passage on Feb 3-4 and a dry frontal passage on Feb 6-7
- due to station reporting conventions (24-hr reports collected between 7AM-8AM for most stations), precipitation that fell primarily on Feb 3 was reported for Feb 4 and appears in this 7-day summary



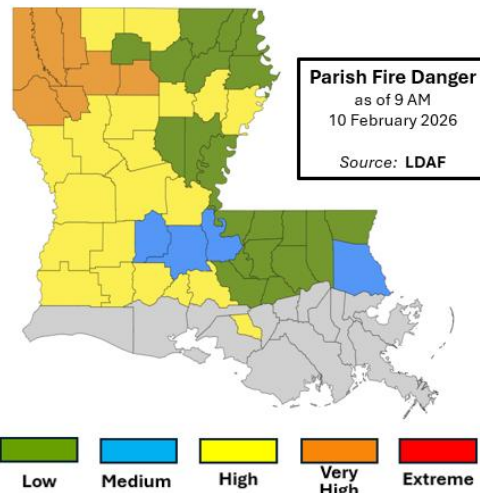
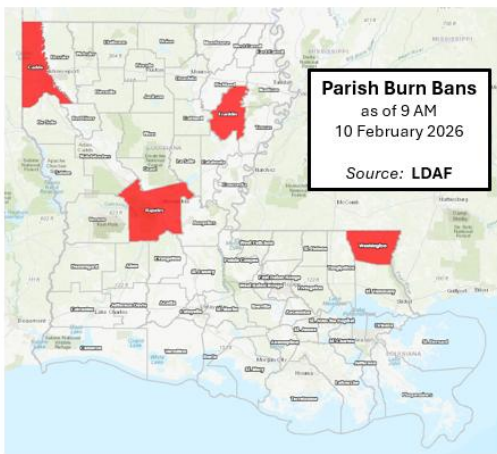
- air masses following frontal passages on Feb 3-4 & Feb 6-7 were Pacific-based and therefore generally mild by the time they reached Louisiana; thus, temperatures were mostly above the 7-day normals
- a record high maximum temperature of 83°F was tied on Feb 10 at the Shreveport SHV AP (NW division) and set at SHV Southern Hills (NW division); a record was also set at Natchitoches #2 - 82°F - Feb 7 (WC division)



U.S. Drought Monitor: Issued February 12, 2026

- includes data thru February 10

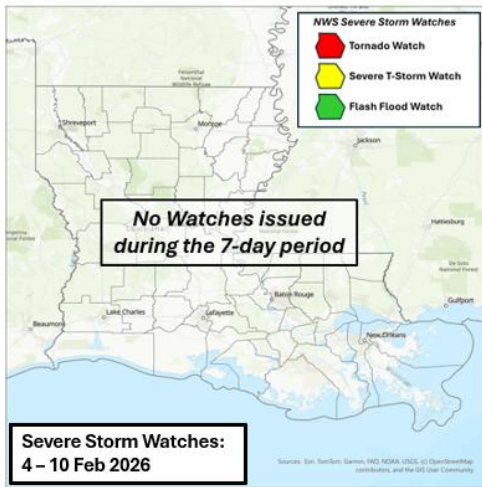
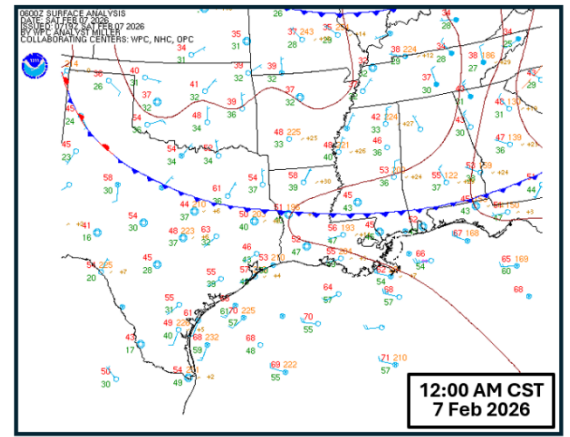
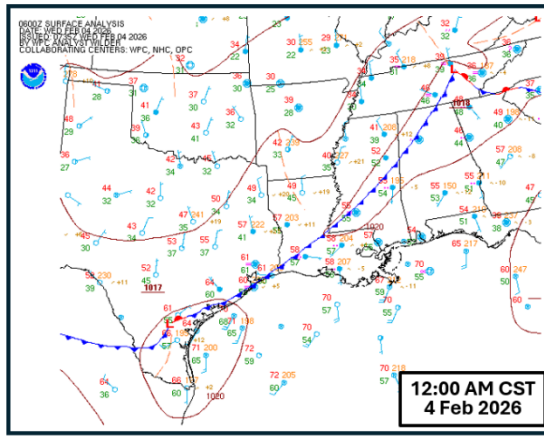
- the updated Drought Monitor depiction showed the additions of D2 ('Severe Drought') for a handful of northwestern parishes and portions of Terrebonne Parish in the southeast
- D3 ('Extreme Drought') coverage increased slightly to 2.3% from just over 1% at the previous assessment, D2 ('Severe Drought') now covers almost 1/4th of the state, with nearly 2/3rds of Louisiana now 'in drought' (D1, D2, or D3)
- a lack of moisture coupled with increased ET (evapotranspiration) resulting from higher temperatures were the main reasons for degradations
- of the reports received, LSU AgCenter agents noted "Very Dry" conditions across 3 parishes, "Dry" conditions across 13, and "Near Normal" conditions across 17
- as of Feb 10, Parish Fire Danger Levels were posted as "Very High" for 7 parishes, "High" for 19 parishes, and "Medium" for another 4 parishes for those parishes which are routinely rated for Fire Danger
- as of Feb 10, 4 parishes have burn bans in effect: Caddo (implemented Feb 8), Franklin (implemented Feb 8), Rapides (implemented Feb 6), and Washington (implemented Feb 9)



Parish **Burn Bans** are issued and lifted by local designated agencies and/or officials. **Daily Fire Danger** maps are produced by the USDA Forest Service, the Nat'l Interagency Fire Center (NIFC) & the LDAF.

Severe Weather:

It was a “quiet” 7-day run for Louisiana, with no severe weather *Watches* or *Warnings* issued during the period in spite of a pair of cold front passages.



Tornado Reports: 4 – 10 February 2026 (Preliminary)

EF Rating	Date	Time	Parish(es)	Peak Winds (mph)	Path Length (mi)	Path Width (yds)	Fatalities Injuries	Prop Dmg
no NWS confirmed tornado reports at this time								

Prop Dmg: Structural Damage

Divisional and Statewide Summary: 04 – 10 Feb 2026

Divisions	Avg T-Max	Avg T-Min	T-Avg (°F)	T-Avg DFN	Highest T-Max	Lowest T-Min	HDD	HDD %Norm	CDD	CDD %Norm	Total P (in.)	P-DFN (in.)	1-Day P-Max	Rain Days
Northwest	70.5	42.5	56.5	+7.5	83	27	62	54	4	200	0.14	-0.86	0.65	1
North Central	67.5	38.6	53.0	+5.3	80	23	84	68	2	200	0.37	-0.84	1.20	1
Northeast	66.9	38.4	52.6	+2.6	77	24	85	79	0	0	0.64	-0.66	1.50	1
West Central	71.5	40.8	56.1	+5.3	82	28	65	64	5	167	0.84	-0.25	1.30	1
Central	69.9	41.6	55.8	+5.2	81	27	65	63	3	100	0.82	-0.42	2.00	1
East Central	68.9	39.9	54.4	+1.5	79	28	73	83	1	33	0.72	-0.46	1.31	1
Southwest	69.2	45.3	57.2	+4.0	80	30	54	64	1	33	0.86	-0.22	1.53	1
South Central	69.1	43.0	56.0	+1.5	77	26	61	78	0	0	0.92	-0.11	1.22	1
Southeast	66.5	44.4	55.5	-1.1	79	34	66	102	0	0	0.62	-0.46	1.75	2
STATE	68.9	41.6	55.2	+3.5	83	23	68	71	2	66	0.66	-0.48	2.00	1

T - Temperature (°F) DFN - Departure from Normal P - Precipitation (in.) "-" indicates data not available "M" - missing observation(s)

Station Summaries by Division: 04 – 10 Feb 2026

Includes NWS Cooperative and CoCoRaHS Stations

Northwest Division															
Stations	Avg T-Max	Avg T-Min	T-Avg	T-Avg DFN	Highest T-Max	Lowest T-Min	HDD	HDD %Norm	CDD	CDD %Norm	Total P (in.)	P- DFN (in.)	1-Day P-Max	P-Max Date	Rain Days
Blanchard	-	-	-	-	-	-	-	-	-	-	0.00	-	-	-	0
Bossier City 4.0 S	-	-	-	-	-	-	-	-	-	-	0.16	-	0.16	2/4	1
Converse 7.8 NNW	-	-	-	-	-	-	-	-	-	-	0.65	-	0.65	2/4	1
Coushatta 4.3 ENE	-	-	-	-	-	-	-	-	-	-	0.61	-	0.61	2/4	1
Keithville	-	-	-	-	-	-	-	-	-	-	0.09	-0.87	0.09	2/4	1
Mooringsport 1 N	68.4	41.6	55.0	+6.7	80	33	70	59	0	0	0.00	-1.02	-	-	0
Plain Dealing	-	-	-	-	-	-	-	-	-	-	0.00	-0.91	-	-	0
Red River Res Sta	69.4	41.6	55.5	+6.9	81	29	69	59	5	500	0.15	-0.90	0.15	2/4	1
Shreveport DTN AP	71.4	44.7	58.1	+7.3	82	33	52	51	7	233	0.00	-1.03	-	-	0
Shreveport SHV AP	72.0	44.3	58.1	+8.0	83	28	51	48	5	250	0.00	-1.00	-	-	0
Shreveport WFO	70.6	45.9	58.2	+9.4	81	32	51	44	5	500	0.00	-0.98	-	-	0
SHV Southern Hills	71.4	37.0	54.2	+6.7	83	27	79	64	4	400	0.11	-0.96	0.11	2/4	1
Stonewall 5.3 NE	-	-	-	-	-	-	-	-	-	-	0.10	-	0.10	2/4	1
Taylorstown	-	-	-	-	-	-	-	-	-	-	0.10	-	0.10	2/4	1
Division	70.5	42.5	56.5	+7.5	83	27	62	54	4	200	0.14	-0.86	0.65		1
North Central Division															
Arcadia	-	-	-	-	-	-	-	-	-	-	0.33	-0.90	0.33	2/4	1
Bienville 3 NE	68.9	42.0	55.4	+6.7	79	27	67	58	2	200	0.00	-1.35	-	-	0
Calhoun 4.3 SSE	-	-	-	-	-	-	-	-	-	-	0.43	-0.75	0.43	2/4	1
Columbia Lock	65.6	39.3	52.4	+4.1	80	30	89	75	3	300	0.94	-0.39	0.90	2/4	2
Homer 1 N	69.3	37.6	53.4	+7.5	80	23	85	63	5	500	0.00	-1.18	-	-	0
Jamestown	-	-	-	-	-	-	-	-	-	-	0.19	-1.01	0.19	2/4	1
Jonesboro 3.8 ESE	-	-	-	-	-	-	-	-	-	-	0.52	-	0.52	2/4	1
Monroe MLU AP	67.7	41.6	54.6	+5.7	80	31	71	62	1	50	0.00	-1.08	-	-	0
Monroe 26 N	65.9	32.3	49.1	+2.6	80	23	109	83	0	0	M	M	M	M	M
Quitman 2.5 E	-	-	-	-	-	-	-	-	-	-	0.33	-	0.33	2/4	1
Rocky Branch 1.3 W	-	-	-	-	-	-	-	-	-	-	0.29	-	0.29	2/4	1
Ruston 5.4 ENE	-	-	-	-	-	-	-	-	-	-	0.27	-	0.27	2/4	1
Ruston 5.5 NNW	-	-	-	-	-	-	-	-	-	-	0.31	-0.79	0.31	2/4	1
Sikes 1.0 SW	-	-	-	-	-	-	-	-	-	-	1.20	-	1.20	2/4	1
Division	67.5	38.6	53.0	+5.3	80	23	84	68	2	200	0.37	-0.84	1.20		1
Northeast Division															
FSA-Oak Grove 0.2 S	-	-	-	-	-	-	-	-	-	-	0.62	-	0.62	2/4	1
FSA-St. Joseph 0.5 NNW	-	-	-	-	-	-	-	-	-	-	1.50	-	1.50	2/4	1
FSA-Tallahula 1.7 SSE	-	-	-	-	-	-	-	-	-	-	0.58	-	0.58	2/4	1
Oak Grove	-	-	-	-	-	-	-	-	-	-	0.62	-0.73	0.62	2/4	1
Oak Grove 1.9 E	-	-	-	-	-	-	-	-	-	-	0.62	-	0.62	2/4	1
Pioneer 0.3 WSW	-	-	-	-	-	-	-	-	-	-	0.54	-	0.54	2/4	1
Tallahula TVR AP	66.9	38.4	52.6	+2.6	77	24	85	79	0	0	0.00	-1.24	-	-	0
Winnsboro 5 SSE	M	M	M	M	M	M	M	M	M	M	0.65	-0.67	0.65	2/4	1
Division	66.9	38.4	52.6	+2.6	77	24	85	79	0	0	0.64	-0.66	1.50		1

T - Temperature (°F) DFN - Departure from Normal P - Precipitation (in.) "-" indicates data not available "M" - missing observation(s)

Station Summaries by Division: 04 – 10 Feb 2026

Includes NWS Cooperative and CoCoRaHS Stations

West Central Division															
Stations	Avg T-Max	Avg T-Min	T-Avg	T-Avg DFN	Highest T-Max	Lowest T-Min	HDD	HDD %Norm	CDD	CDD %Norm	Total P (in.)	P- DFN (in.)	1-Day P-Max	P-Max Date	Rain Days
Anacoco 3.0 SW	-	-	-	-	-	-	-	-	-	-	0.38	-	0.38	2/4	1
Campti 0.6 SW	-	-	-	-	-	-	-	-	-	-	0.82	-	0.82	2/4	1
Campti 5.7 ENE	-	-	-	-	-	-	-	-	-	-	1.02	-	1.02	2/4	1
Goldonna 1.5 N	-	-	-	-	-	-	-	-	-	-	0.74	-	0.74	2/4	1
Hornbeck 2.3 NE	-	-	-	-	-	-	-	-	-	-	0.36	-	0.36	2/4	1
Leesville	72.4	41.3	56.9	+5.8	82	28	61	60	6	200	0.89	-0.25	0.89	2/4	1
Leesville 7.1 SSW	-	-	-	-	-	-	-	-	-	-	1.08	-	1.08	2/4	1
Natchitoches #2	70.6	40.3	55.4	+4.7	82	31	69	67	4	133	1.13	-0.04	1.13	2/4	1
Noble 1.8 ESE	-	-	-	-	-	-	-	-	-	-	0.76	-	0.76	2/4	1
Pitkin 6.6 WNW	-	-	-	-	-	-	-	-	-	-	1.30	-	1.30	2/4	1
Pleasant Hill 10.2 SE	-	-	-	-	-	-	-	-	-	-	0.76	-0.04	0.76	2/4	1
Division	71.5	40.8	56.1	+5.3	82	28	65	64	5	167	0.84	-0.25	1.30		1
Central Division															
Alexandria	69.0	39.0	54.0	+3.4	80	32	74	72	0	0	0.03	-1.27	0.03	2/4	1
Alexandria 5 SSE	72.6	39.4	56.0	+4.8	81	32	65	64	3	75	2.00	+0.67	2.00	2/4	1
Alexandria AEX AP	70.3	44.6	57.4	+6.2	79	31	56	57	4	133	0.02	-0.98	0.02	2/4	1
Alexandria ESF AP	70.6	41.1	55.9	+5.3	81	27	68	65	6	200	0.04	-1.16	0.04	2/4	1
Boyce 3 WNW	67.1	43.9	55.5	+6.1	77	32	64	58	0	0	0.00	-1.25	0.00	-	-
Bunkie	M	M	M	M	M	M	M	M	M	M	0.75	-0.64	0.75	2/4	1
Colfax 7.2 NW	-	-	-	-	-	-	-	-	-	-	0.93	-	0.93	2/4	1
FSA-Ferriday 1.0 WSW	-	-	-	-	-	-	-	-	-	-	0.80	-	0.80	2/4	1
FSA-Opelousas 1.0 ESE	-	-	-	-	-	-	-	-	-	-	2.13	-	2.00	2/4	4
Grand Coteau 2.7 E	-	-	-	-	-	-	-	-	-	-	1.04	-0.06	1.04	2/4	1
Hessmer 2.5 WSW	-	-	-	-	-	-	-	-	-	-	0.75	-	0.75	2/4	1
Jonesville Locks	M	M	M	M	M	M	M	M	M	M	1.24	-0.11	1.24	2/4	1
Marksville	-	-	-	-	-	-	-	-	-	-	1.29	-0.02	1.29	2/4	1
Pineville 0.4 NNW	-	-	-	-	-	-	-	-	-	-	0.49	-	0.49	2/4	1
Red River Lock #1	-	-	-	-	-	-	-	-	-	-	0.50	-0.63	0.50	2/4	1
Red River Lock #2	-	-	-	-	-	-	-	-	-	-	0.00	-1.30	0.00	-	-
Trout 4.4 WSW	-	-	-	-	-	-	-	-	-	-	1.98	-	1.98	2/4	1
Ville Platte	-	-	-	-	-	-	-	-	-	-	0.82	-0.43	0.82	2/4	1
Division	69.9	41.6	55.8	+5.2	81	27	65	63	3	100	0.82	-0.42	2.00		1
East Central Division															
Baker	-	-	-	-	-	-	-	-	-	-	0.70	-0.66	0.70	2/4	1
Baton Rouge Metro AP	70.6	43.6	57.1	+2.8	79	32	57	71	3	60	0.49	-0.65	0.49	2/4	1
Baton Rouge 0.5 ESE	-	-	-	-	-	-	-	-	-	-	0.96	-	0.95	2/4	2
Baton Rouge 3.5 E	-	-	-	-	-	-	-	-	-	-	0.94	-	0.94	2/4	1
Baton Rouge 6.2 SSE	-	-	-	-	-	-	-	-	-	-	1.24	-	1.24	2/4	1
Central 2.2 SE	-	-	-	-	-	-	-	-	-	-	0.71	-0.46	0.71	2/4	1
Covington 8 WNW	69.4	38.7	54.1	+1.1	77	30	75	86	0	0	0.94	-0.14	0.51	2/4	2
Denham Springs 6.8 N	-	-	-	-	-	-	-	-	-	-	0.68	-0.56	0.68	2/4	1

T - Temperature (⁰F) DFN - Departure from Normal P - Precipitation (in.) "-" indicates data not available "M" - missing observation(s)

Station Summaries by Division: 04 – 10 Feb 2026

Includes NWS Cooperative and CoCoRaHS Stations

East Central Division (cont.)															
Stations	Avg T-Max	Avg T-Min	T-Avg	T-Avg DFN	Highest T-Max	Lowest T-Min	HDD	HDD %Norm	CDD	CDD %Norm	Total P (in.)	P- DFN (in.)	1-Day P-Max	P-Max Date	Rain Days
FSA-Amite City 0.8 SW	-	-	-	-	-	-	-	-	-	-	0.37	-	0.37	2/4	1
FSA-Franklin. 0.6 WSW	-	-	-	-	-	-	-	-	-	-	0.30	-	0.30	2/4	1
Jackson 3.6 NNE	-	-	-	-	-	-	-	-	-	-	0.59	-	0.59	2/4	1
Lacombe 1.4 N	-	-	-	-	-	-	-	-	-	-	0.51	-0.65	0.48	2/4	2
Livingston	-	-	-	-	-	-	-	-	-	-	1.12	-0.06	1.12	2/4	1
LSU Campus	-	-	-	-	-	-	-	-	-	-	0.95	-0.27	0.95	2/4	1
New Roads 5 NE	M	M	M	M	M	M	M	M	M	M	0.80	-0.53	0.80	2/4	1
Ponchatoula 4 E	-	-	-	-	-	-	-	-	-	-	0.70	-0.44	0.70	2/4	1
Ponchatoula 5.3 W	-	-	-	-	-	-	-	-	-	-	0.85	-	0.85	2/4	1
Port Allen	-	-	-	-	-	-	-	-	-	-	1.31	0.00	1.31	2/4	1
Slidell	68.0	41.3	54.6	+1.6	72	32	70	81	0	0	0.45	-0.64	0.45	2/4	1
Slidell ASD AP	68.1	38.7	53.4	-0.2	76	31	79	94	0	0	0.13	-0.87	0.13	2/4	1
Slidell 4.4 E	-	-	-	-	-	-	-	-	-	-	0.41	-0.72	0.41	2/4	1
St. Francisville 1 NE	68.4	37.4	52.9	+2.3	78	28	83	82	0	0	0.94	-	0.94	2/4	1
Talisheek	-	-	-	-	-	-	-	-	-	-	0.35	-0.74	0.35	2/4	1
Wakefield 0.2 E	-	-	-	-	-	-	-	-	-	-	0.82	-	0.82	2/4	1
Division	68.9	39.9	54.4	+1.5	79	28	73	83	1	33	0.72	-0.46	1.31		1
Southwest Division															
Abbeville	-	-	-	-	-	-	-	-	-	-	0.92	-0.11	0.92	2/4	1
Branch 0.4 SSW	-	-	-	-	-	-	-	-	-	-	1.53	-	1.53	2/4	1
Church Point 0.7 WSW	-	-	-	-	-	-	-	-	-	-	1.37	-	1.37	2/4	1
Crowley 2 NE	-	-	-	-	-	-	-	-	-	-	1.03	-0.03	1.03	2/4	1
Dry Creek 8 NW	-	-	-	-	-	-	-	-	-	-	0.70	-0.53	0.70	2/4	1
FSA-De Ridder 0.9 E	-	-	-	-	-	-	-	-	-	-	1.09	-	1.09	2/4	1
Jennings	67.3	47.1	57.2	+4.3	74	36	54	61	2	67	1.00	-0.09	1.00	2/4	1
Kaplan	-	-	-	-	-	-	-	-	-	-	0.77	-0.16	0.77	2/4	1
Lake Arthur 7 SW	M	M	M	M	M	M	M	M	M	M	0.53	-0.54	0.53	2/4	1
Lake Charles 2 N	-	-	-	-	-	-	-	-	-	-	1.50	+0.49	1.50	2/4	1
Lake Charles Port	-	-	-	-	-	-	-	-	-	-	0.56	-0.57	0.56	2/4	1
Lake Charles LCHAP	71.1	45.6	58.4	+3.0	78	36	47	65	2	40	0.02	-0.83	0.02	2/4	1
Lake Charles 4.8 SSE	-	-	-	-	-	-	-	-	-	-	0.43	-	0.43	2/4	1
Leland Bowman Lock	66.1	46.7	56.4	+4.0	73	38	60	67	1	100	0.38	-0.69	0.38	2/4	1
Moss Bluff	-	-	-	-	-	-	-	-	-	-	0.58	-0.57	0.58	2/4	1
Moss Bluff 2 NNW	71.6	41.3	56.4	+2.5	80	30	59	72	0	0	0.64	-0.55	0.64	2/4	1
Oberlin Fire Tower	70.0	45.6	57.8	+6.1	78	33	52	54	2	100	0.70	-0.49	0.70	2/4	1
Ragley 5.0 SE	-	-	-	-	-	-	-	-	-	-	1.48	+0.35	1.48	2/4	1
Rayne 1.0 W	-	-	-	-	-	-	-	-	-	-	1.13	-	1.13	2/4	1
Sulphur 2.2 E	-	-	-	-	-	-	-	-	-	-	0.90	-0.13	0.90	2/4	1
Division	69.2	45.3	57.2	+4.0	80	30	54	64	1	33	0.86	-0.22	1.53		1

T - Temperature (°F) DFN - Departure from Normal P - Precipitation (in.) "-" indicates data not available "M" - missing observation(s)

Station Summaries by Division: 04 – 10 Feb 2026

Includes NWS Cooperative and CoCoRaHS Stations

South Central Division															
Stations	Avg T-Max	Avg T-Min	T-Avg	T-Avg DFN	Highest T-Max	Lowest T-Min	HDD	HDD %Norm	CDD	CDD %Norm	Total P (in.)	P- DFN (in.)	1-Day P-Max	P-Max Date	Rain Days
Baldwin 1.8 N	-	-	-	-	-	-	-	-	-	-	0.67	-	0.65	2/4	2
Breaux Bridge 0.7 NNW	-	-	-	-	-	-	-	-	-	-	1.06	-	1.06	2/4	1
Carville 2 SW	70.3	45.9	58.1	+3.4	77	36	46	61	0	0	1.06	+0.02	1.06	2/4	1
Donaldsonville 4 SW	69.9	40.7	55.3	+1.2	77	34	66	81	0	0	0.83	-0.17	0.81	2/4	2
Jeanerette 5 NW	66.6	40.7	53.6	+0.1	73	26	79	94	0	0	0.68	-0.30	0.68	2/4	1
Lafayette LFT AP	69.7	44.9	57.3	+2.1	76	35	53	72	2	40	0.72	-0.29	0.72	2/4	1
Lafayette 2.9 ENE	-	-	-	-	-	-	-	-	-	-	1.01	-	1.01	2/4	1
New Iberia ARA AP	68.9	43.0	55.9	+0.7	76	33	63	85	0	0	0.66	-0.25	0.66	2/4	1
Plaquemine 2 N	-	-	-	-	-	-	-	-	-	-	1.09	-0.09	1.09	2/4	1
St. Gabriel 2.8 NNW	-	-	-	-	-	-	-	-	-	-	1.09	-	1.09	2/4	1
St. Martinville 0.2 S	-	-	-	-	-	-	-	-	-	-	1.24	+0.14	1.22	2/4	2
Division	69.1	43.0	56.0	+1.5	77	26	61	78	0	0	0.92	-0.11	1.22		1
Southeast Division															
Belle Chase 1.6 NNE	-	-	-	-	-	-	-	-	-	-	0.49	-	0.48	2/4	2
Cut Off 0.8 WNW	-	-	-	-	-	-	-	-	-	-	0.13	-	0.13	2/4	1
Dulac 3 N	-	-	-	-	-	-	-	-	-	-	0.33	-0.73	0.30	2/4	3
Dutchtown #2	-	-	-	-	-	-	-	-	-	-	1.75	+0.56	1.75	2/4	1
Gonzales	-	-	-	-	-	-	-	-	-	-	1.12	+0.03	1.12	2/4	1
Houma 4.1 NNE	-	-	-	-	-	-	-	-	-	-	0.37	-	0.33	2/4	2
NO-Armstrong AP	69.1	45.1	57.1	+0.6	79	36	54	82	1	14	0.40	-0.62	0.40	2/4	1
NO-Lakefront AP	63.6	47.0	55.3	-1.2	77	37	68	105	0	0	0.29	-0.69	0.28	2/4	2
New Orleans 2.8 E	-	-	-	-	-	-	-	-	-	-	0.58	-	0.55	2/4	2
Metairie 2.8 ENE	-	-	-	-	-	-	-	-	-	-	0.58	-	0.55	2/4	2
Raceland 2.1 WSW	-	-	-	-	-	-	-	-	-	-	0.80	-	0.80	2/4	1
River Ridge 0.7 N	-	-	-	-	-	-	-	-	-	-	0.55	-	0.50	2/4	2
St. Amant 3.3 N	-	-	-	-	-	-	-	-	-	-	0.96	-	0.95	2/4	2
St. Rose 0.3 W	-	-	-	-	-	-	-	-	-	-	0.64	-	0.52	2/4	2
Thibodaux 4 SE	66.9	41.1	54.0	-2.6	76	34	75	115	0	0	0.45	-0.66	0.45	2/4	1
Westwego 2.4 ENE	-	-	-	-	-	-	-	-	-	-	0.49	-	0.49	2/4	1
Division	66.5	44.4	55.5	-1.1	79	34	66	102	0	0	0.62	-0.46	1.75		2

T - Temperature (°F) DFN - Departure from Normal P - Precipitation (in.) "-" indicates data not available "M" - missing observation(s)

Precipitation and temperature data are primarily retrieved through the ACIS QueryBuilder (rcc-acis.org) and the cli-MATE platform (MRCC Application Tools Environment), both of which are maintained by the NOAA Regional Climate Centers (RCCs).

Drought data are sourced from the U.S. Drought Monitor (unl.edu), the LSU AgCenter, and the Louisiana Dept. of Agriculture & Forestry.