

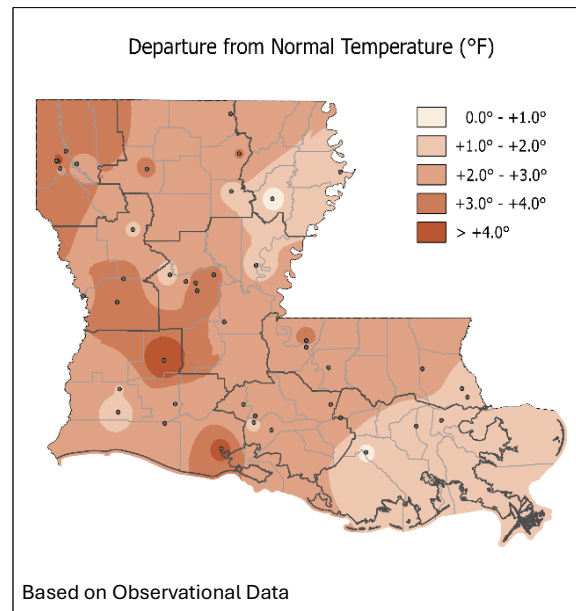
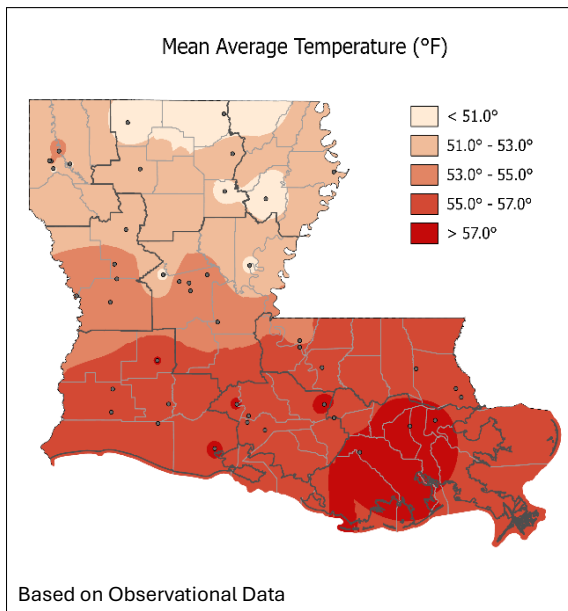
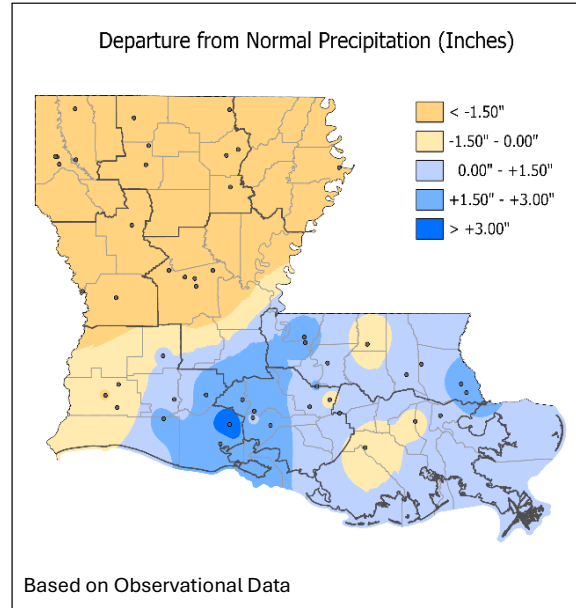
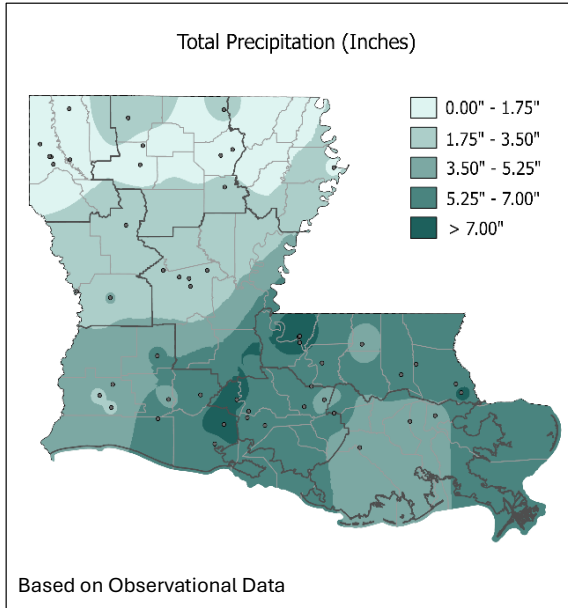


LOUISIANA MONTHLY CLIMATE REVIEW

Volume 1, Issue 12

December 2025

December Total Precipitation and Monthly Average Temperatures

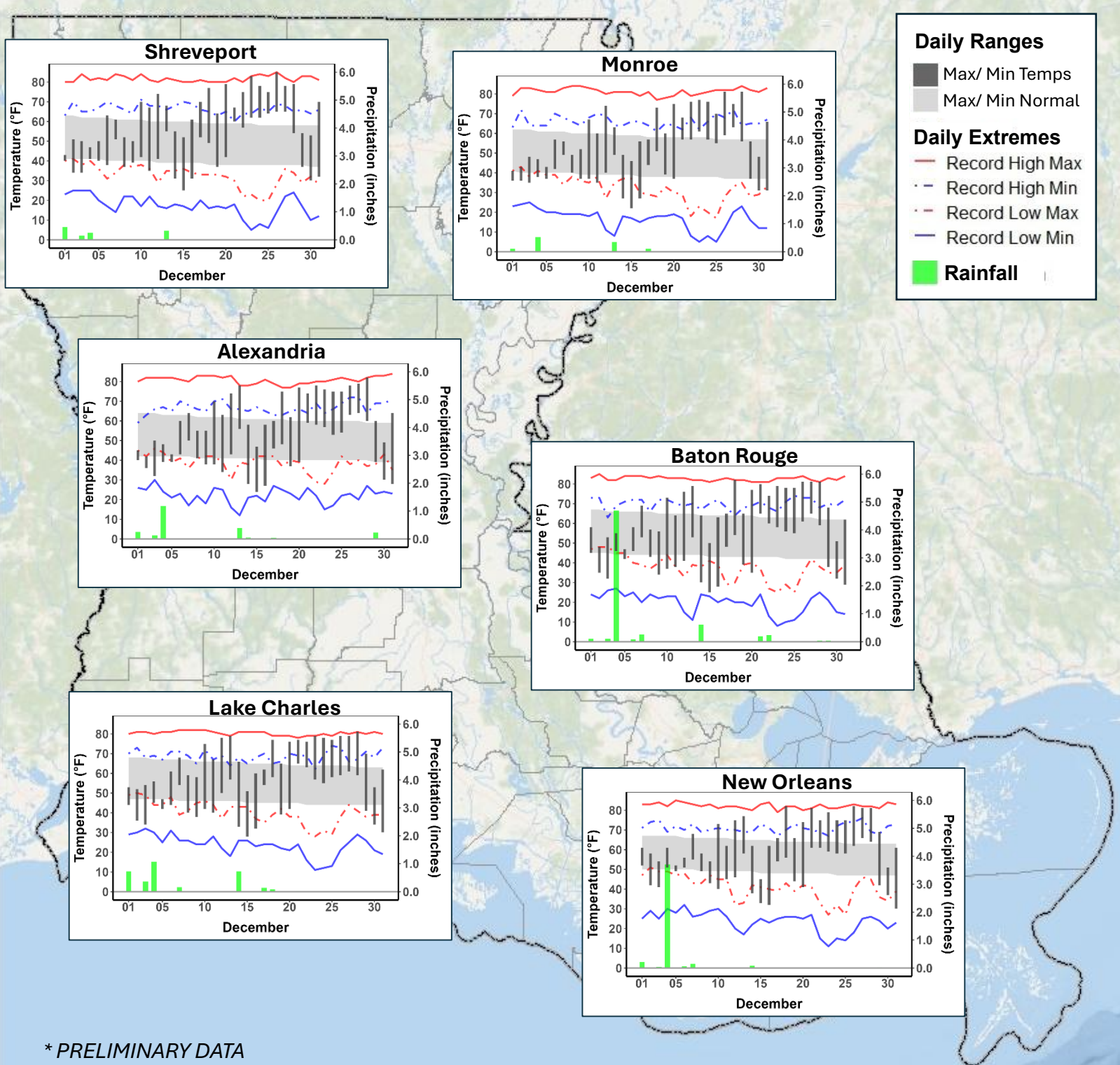


December Highlights:

December marks the 7th consecutive month with below-average rainfall for Louisiana. However, monthly rain totals demonstrated a substantial gradient across the state, averaging under 2.00” for the northern 1/3rd of the state but running near-normal to above normal (4.00” to 6.00”+) across much of southern Louisiana. December monthly average temperatures were above normal across the state, with departures running from +1.0°F to +4.0°F for most locations.

The “dry” and “warm” trends for December meant a continuation of drought for roughly 40% of the state at month’s end, but that was a modest improvement compared to the start of December, when roughly 60% of the state was “in drought” according to the *U.S. Drought Monitor*.

Climographs for Selected Cities: December 2025



* PRELIMINARY DATA

December Synopsis:

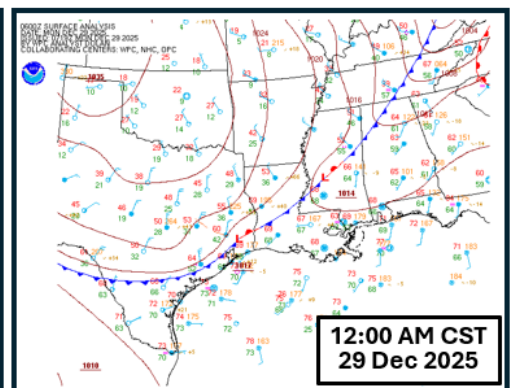
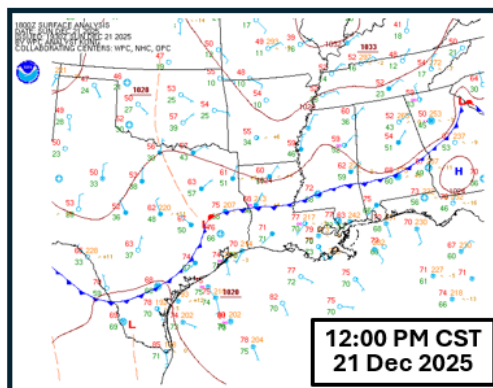
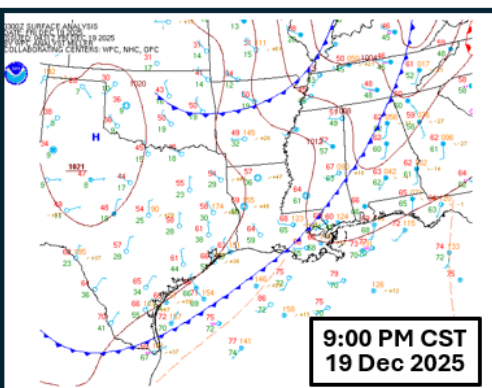
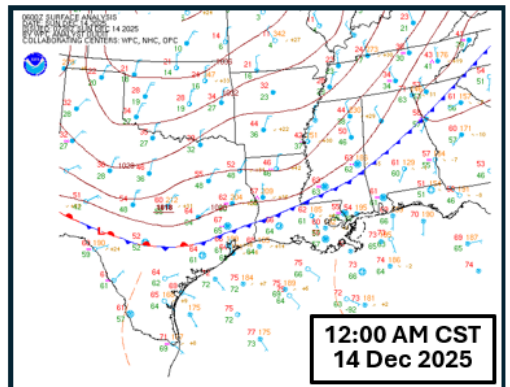
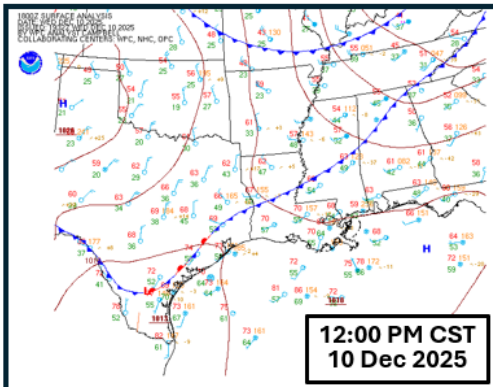
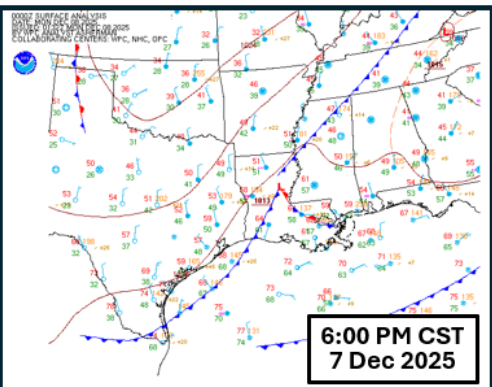
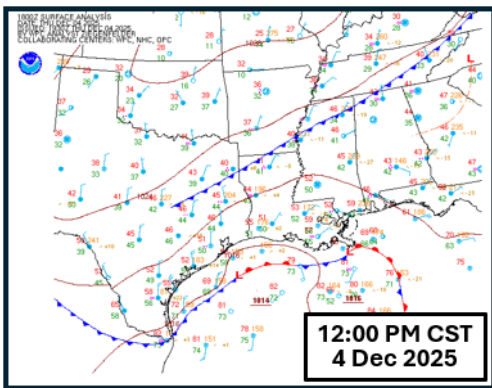
December is traditionally a month marked by an increase in frontal activity when compared to the autumn months. December is also a month where rainfall tends to exceed evaporative demand, leading to considerable surplus moisture and “wet” environments. While December 2025 saw frequent frontal passages, several of those fronts were relatively unproductive in terms of rainfall and certainly “quiet” with respect to active/severe weather.

December opened with a string of cold winter-like days, with the “wettest” frontal event for the month (Dec 4-5) generating a substantial portion of the monthly rain totals around the state. A second frontal system on Dec 7-8 kept much of the state cooler-than-normal for a few more days before highs rebounded into the 70°s and 80°s. A mid-month Arctic front produced minimal rainfall but delivered the season’s first ‘hard freezes’ for much of the state. Most sites in the state reported their lowest temperatures of the month behind that Dec 13-14 frontal passage.

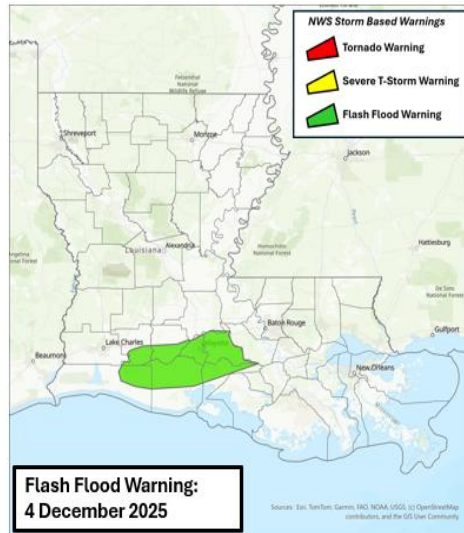
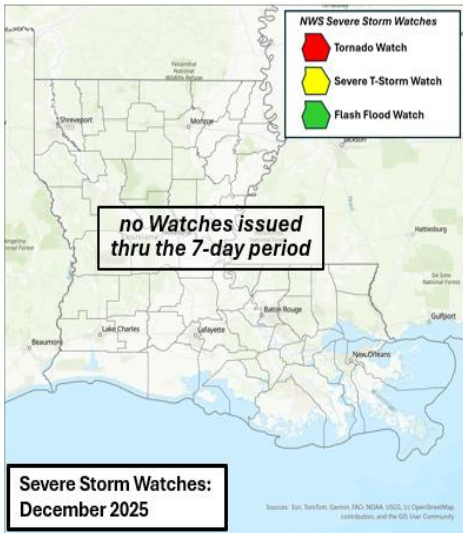
That mid-month mega-chill was quickly followed by a warming trend that resulted in near-record to record highs around the state between Dec 18-28, with many Louisiana sites also recording near-record “warm” minimums over that 11-day stretch. It was during this stretch that the Bayou State dealt with a run of days with dense fog, enhanced by inflow of “mild” and moist Gulf air over relatively cool surfaces, especially at night and into the early mornings.

December closed with another Arctic cold front, once again driving lows down into the 20°s for most of the state.

While monthly average temperatures were above-normal statewide, the numbers of December freeze days were generally close to average for most parishes. North Louisiana sites typically reported 5-8 days with freezes. By comparison, freeze day counts were on the order of 2 to 5 days across the majority of southern parishes.



December 2025 Storm Activity



Storm-Based Warnings are issued by local NWS offices (SHV, JAN, LCH & LIX) as warranted. Local Storm Reports (LSRs) are those event reports that are received and processed by the NWS. In most severe weather outbreaks, the occurrences of severe weather impacts -- such as damaging winds, large hail, and localized floodings -- far exceeds the number of reports included in the LSRs.

Tornado Reports: December 2025 (Preliminary)

EF Rating	Date	Time	Parish(es)	Peak Winds (mph)	Path Length (mi)	Path Width (yds)	Fatalities Injuries	Prop Dmg
no NWS confirmed tornado reports at this time								

Prop Dmg: Structural Damage

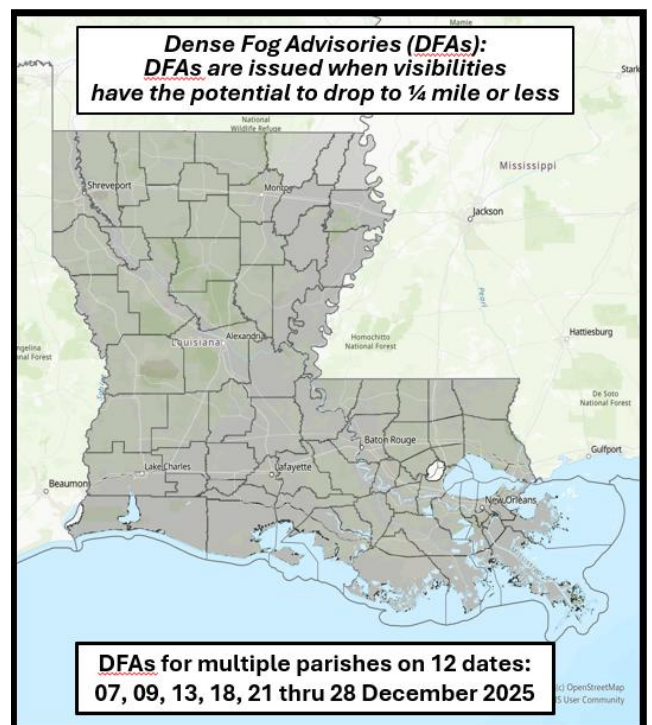
December Severe/Impactful Weather:

Even with the numerous frontal passages, December 2025 was characterized by a lack of active/severe weather during the month. Not a single *Watch* was issued for any part of the state during December, and the only *Warning* was the single *Flash Flood Warning* posted for portions of Acadiana on Dec 4th.

However, December’s weather story does include the frequent return of overnight-into-morning dense fog, thanks in a large part to the persistence of “warm” and humid Gulf air between the month’s frontal passages.

There were 12 dates with large swaths of parishes included in Dense Fog Advisories (DFAs), including 8 consecutive days near month’s end (Dec 21-28). Every parish was included within at least one DFA during the month, with numerous southern parishes included in multiple advisories.

Fog was deemed as a contributing factor for at least two traffic accidents on Christmas Eve in the greater New Orleans area, including a pileup on I-10 involving at least 6 vehicles and multiple injuries.



Selected December Extremes:

Most Louisiana reporting sites reached 80° or more on at least 1 day in December 2025, with many stations recording record to near-record high temperatures on multiple days during the month. The unusually “warm” spell between Dec 18-28 accounted for most of these daytime highs. December’s statewide maximum high was 85°F, recorded on Dec 26th at Shreveport SHV AP (NW Div). That’s a whopping 27° above the normal high for that location and date!

Yet even with the “warm” trend for the month, three Arctic air masses -- one to open December, one at mid-month, and the third to end the month -- delivered big chills to the Bayou State. December 2025’s statewide minimum was a bitterly-cold 19°, recorded on the morning of Dec 15 at Monroe 26 N (NC Div) and also Winnsboro 5 SSE (NE Div). The winter air masses drove freezing temperatures all the way into the coastal parishes, with ‘hard freezes’ extending southward to the I-10/12 corridor during the mid-month and end-of-month Arctic blasts.

Numerous sites across the northern parishes reported less than 2.00” of rain for December, with West Monroe (NC Div) being Louisiana’s dry spot with just 0.89” for the month. By contrast, a number of south Louisiana locations recorded more than 7.00” of rain during December, with Abbeville (SC Div) recording 8.72” and nearby Kaplan (SC Div) at 8.10” for their monthly totals. Big rains for the southern parishes were largely the result of the very “wet” rain event of Dec 4-5, which netted 1-day totals of 5.00” or more for St. Francisville 1 NE, New Roads 5 NE, and FSA-Amite City 0.8 SW (all three in the EC Div).

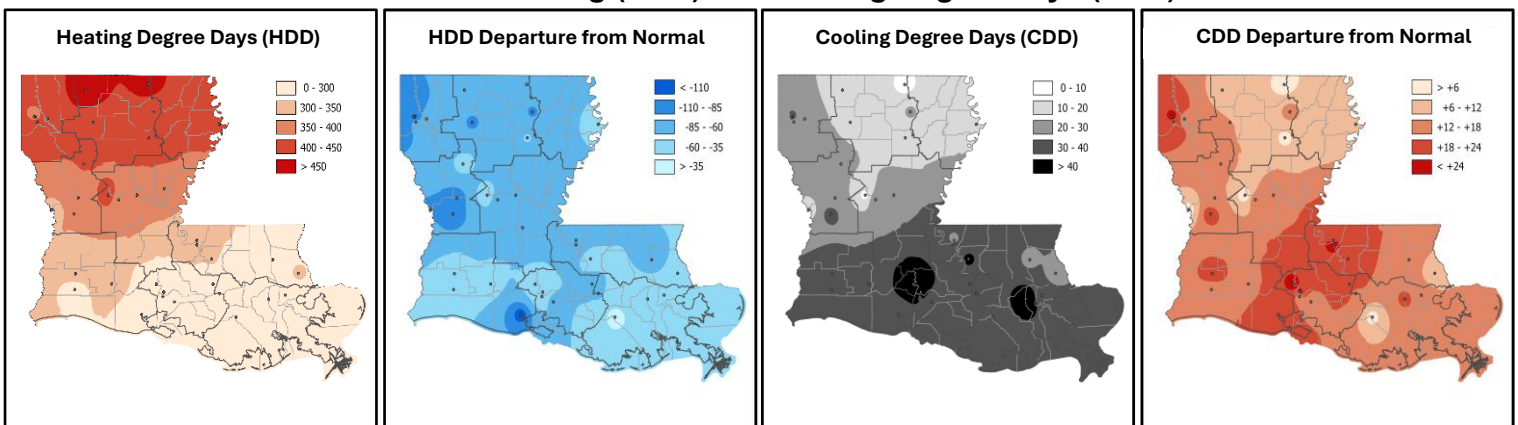
December Degree Day Assessment:

With monthly temperatures around the state running 1.0° to 4.0° above average, December Cooling Degree-Day totals (CDDs) were also above-normal statewide. However, CDDs were generally minimal, with no station recording accumulations of 50 units or more.

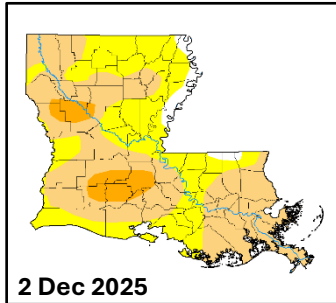
As we head into the heart of winter, Heating Degree-Days (HDDs) become a more important index of indoor comfort and indoor energy demands. December’s “warmth” resulted in below-average HDD totals around the state, with most sites indicating December HDDs that were 10% to 20% below-normal.

With an outlook for a “mild” Louisiana winter due to the continuation of *La Niña* over the next 1-3 months, Louisiana residents may benefit from shortened and/or less frequent bitterly-cold Arctic outbreaks, potentially lowering heating demands over the next couple of months.

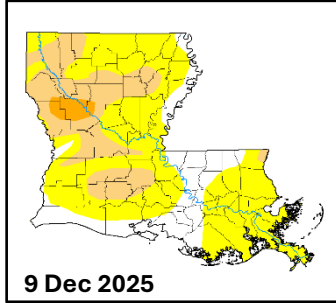
December Heating (HDD) and Cooling Degree Days (CDD)



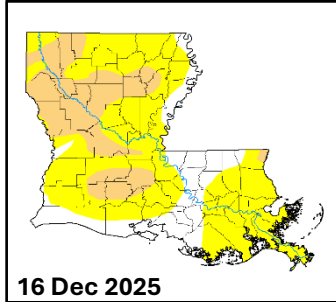
Degree Day (DD) units can be used as proxies for energy demand required to maintain indoor thermal comfort. Heating DDs reflect the needs for indoor heating; Cooling DDs approximate the energy needs for indoor cooling. DDs compare the daily average temperature against a threshold of 65°F, with the average daily temperature defined as: $(T_{avg} = [T_{max} + T_{min}] / 2)$, where T_{max} is the daily high temperature and T_{min} is the daily minimum. CDDs are accumulated as the sum of the difference between the daily average temperature (T_{avg}) and 65°F when $T_{avg} > 65°F$; HDDs are the accumulated difference between T_{avg} and 65°F when $T_{avg} < 65°F$.



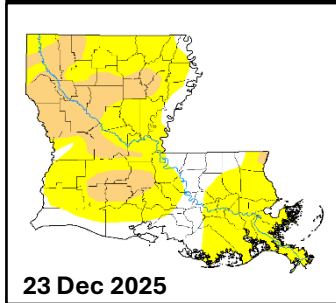
2 Dec 2025



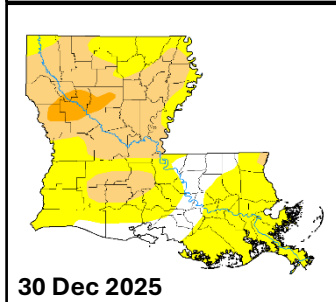
9 Dec 2025



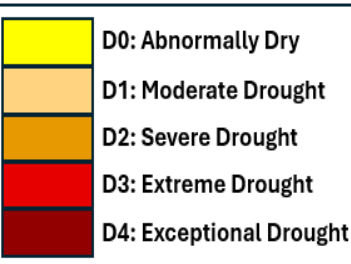
16 Dec 2025



23 Dec 2025



30 Dec 2025



Louisiana Weekly U.S. Drought Monitor (USDM) thru December:

Louisiana began December 2025 with about 38% of the state designated as D0 ('Abnormally Dry'), about 52% designated as D1 ('Moderate Drought'), and about 7% designated as D2 ('Severe Drought'). By month's end, D0 coverage decreased to about 49%, D1 coverage decreased to about 37%, and D2 coverage decreased to about 4%. Field Condition Reports (courtesy of the LSU AgCenter) noted critical dryness across northern, southeastern, and south-central Louisiana at the beginning of December. By the end of the month, 'Dry' to 'Very Dry' conditions were noted by AgCenter field agents across most of the parishes that reported with a handful of reports noting 'Near Normal' conditions.

During December, the main sources of precipitation across Louisiana are frontal passages. A secondary source is the occasional Gulf low that forms off the southeastern Texas coast and moves in a generally east-to-ENE direction across the northern Gulf. If frontal passages are dry and/or Gulf lows don't develop, precipitation deficits can rapidly develop. Evapotranspiration (ET) is low in December as temperatures are typically cool and vegetation is typically in a dormant or semi-dormant state.

At the start of December, more than half of the state was in some designation of drought with the main epicenters being around Natchitoches Parish and portions of Acadiana. December started with the promise of drought recovery as three frontal passages and a Gulf surface low during the first week provided multiple rounds of precipitation and cooler-than-normal temperatures to the Bayou State. It was a much welcome change after a dry and "warm" November; however, it didn't last. Conditions dried out over the next three weeks as frontal passages on Dec 10, Dec 13, Dec 18, and Dec 21 provided limited moisture and the state's weather was dominated by surface high pressure centered to the east. Additionally, temperatures increased during the middle of the month to well-above-normal with frequent new daily record 'high maximum' and 'high minimum' temperatures. An Arctic front cleared the state on Dec 29 which significantly reduced temperatures but provided little precipitation.

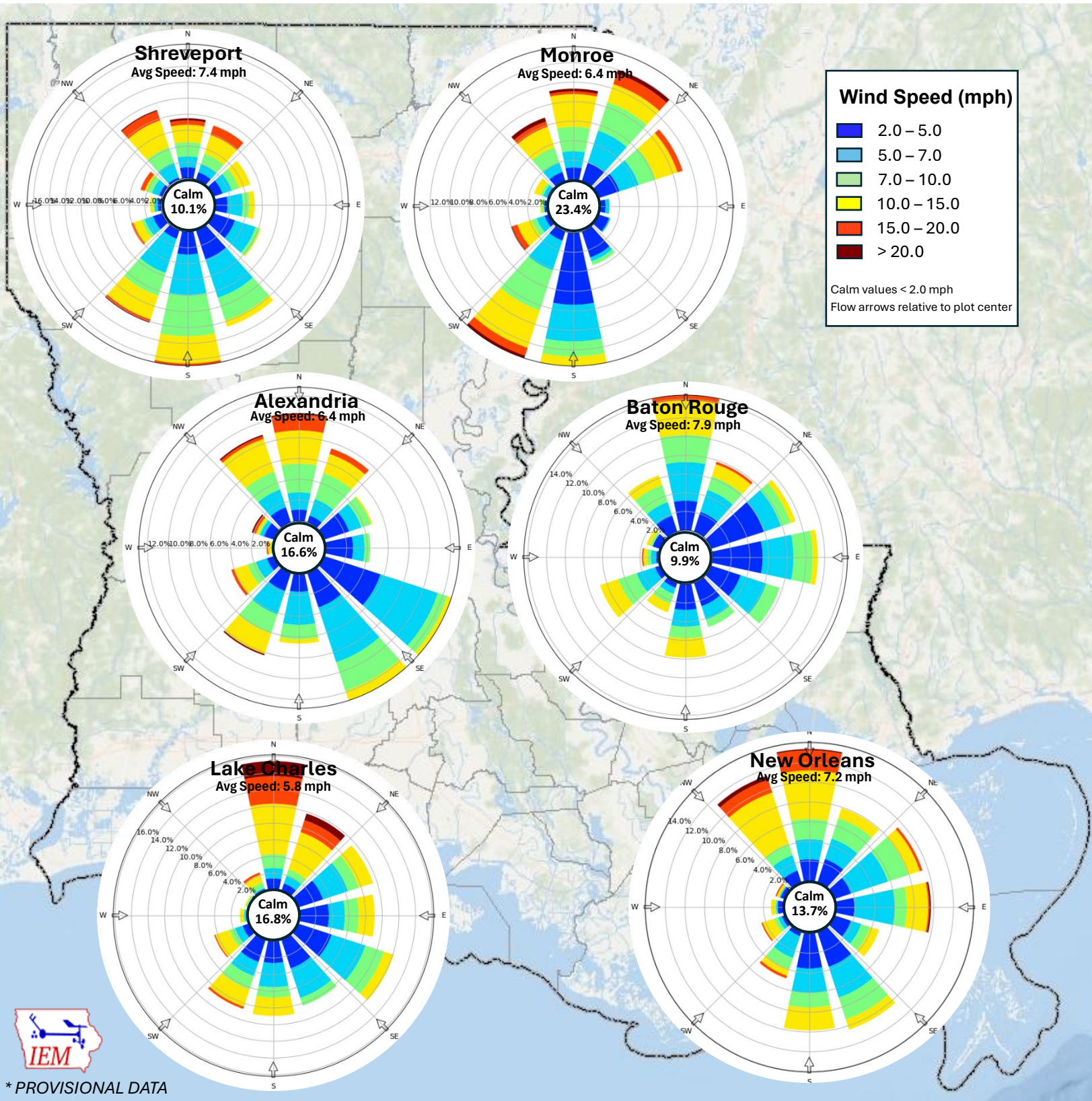
In response to the conditions noted above, the drought monitor depiction released on Dec 11 showed a "blanket" one-category improvement across southern Louisiana which eliminated D2 and reduced the coverage of D1 & D0 in that area. The Dec 18 depiction showed additional improvements which completely eliminated D2 coverage in Louisiana. Unfortunately, as conditions dried out and warmed up, there were no additional improvements the rest of the month and the final depiction released on Dec 31 showed widespread degradations with an increase in D1 coverage and a re-introduction of D2.

Drought and Climate Outlook:

Looking ahead, a transition from *La Niña* to ENSO-neutral conditions is expected for Spring 2026. However, *La Niña* is expected to have some lingering influence during the early spring. *La Niña* events correspond with drier-than-normal conditions for Louisiana during spring, particularly across the southern parishes.

That aligns with the latest three-month outlook from the NWS Climate Prediction Center which also highlights an enhanced potential for above-normal temperatures. Louisiana should prepare for expansion of 'Abnormally Dry' and 'Drought' coverage as evapotranspiration (ET) increases throughout spring and is coupled with a drier-than-normal spring pattern.

Windroses for Selected Cities: December 2025



Windroses Courtesy: [Iowa Environmental Mesonet \(IEM\)](http://www.iem.uiowa.edu), Iowa State University

December Monthly Division & State Temperature and Precipitation Summaries

Divisions	Avg T-Max	Avg T-Min	T-Avg	T-Avg DFN	Highest T-Max	Lowest T-Min	HDD	HDD %Norm	CDD	CDD %Norm	Total Precip	Precip DFN	1-Day P-Max	Rain Days
Northwest	61.8	42.3	52.0	+3.6	85	23	434	84	27	675	1.58	-3.69	1.52	6
North Central	60.2	40.9	50.6	+2.5	81	19	454	86	15	375	1.83	-3.78	1.44	8
Northeast	61.7	39.7	50.7	+1.9	81	19	437	86	16	267	1.66	-3.90	0.80	9
West Central	64.4	42.0	53.2	+3.0	83	23	382	82	24	343	3.11	-2.52	2.00	7
Central	63.6	41.5	52.6	+1.4	83	21	408	94	21	233	3.01	-2.58	3.55	8
East Central	66.2	44.1	55.1	+2.5	82	24	334	84	32	229	6.68	+1.32	5.47	12
Southwest	65.6	46.2	55.9	+2.1	82	25	316	88	35	250	5.25	+0.30	3.80	11
South Central	66.6	45.9	56.3	+1.6	82	26	302	89	39	205	6.11	+1.38	4.87	11
Southeast	66.2	48.7	57.5	+1.3	82	26	265	88	40	160	4.67	+0.17	3.70	10
STATE	64.0	43.5	53.8	+2.0	85	19	370	96	28	187	3.77	-1.46	5.47	9

December Monthly Station & Division Temperature and Precipitation Summaries

Stations	Avg T-Max	Avg T-Min	T-Avg	T-Avg DFN	Highest T-Max	Lowest T-Min	HDD	HDD %Norm	CDD	CDD %Norm	Total Precip	Precip DFN	1-Day P-Max	P-Max Date	Rain Days
Northwest Division															
Blanchard	-	-	-	-	-	-	-	-	-	-	1.48	-	0.64	12/4	7
Bossier City 4.0 S	-	-	-	-	-	-	-	-	-	-	1.19	-	0.36	12/14	5
Converse 7.8 NNW	-	-	-	-	-	-	-	-	-	-	1.49	-	0.75	12/4	4
Keithville	-	-	-	-	-	-	-	-	-	-	1.54	-3.61	0.68	12/14	7
Plain Dealing	-	-	-	-	-	-	-	-	-	-	1.72	-3.24	0.96	12/2	9
Red River Res Sta	59.5	41.3	50.4	+1.9	82	23	464	89	20	333	1.39	-3.61	0.50	12/14	4
Shreveport DTN AP	63.3	44.1	53.7	+3.6	83	24	M	M	M	M	M	M	M	M	M
Shreveport SHV AP	64.5	44.6	54.6	+5.1	85	25	353	72	38	475	1.21	-3.73	0.46	12/1	6
Shreveport WFO	60.6	42.5	51.6	+3.6	82	23	434	82	27	675	1.32	-3.71	0.46	12/1	8
SHV Southern Hills	60.9	38.9	49.9	+2.1	84	23	483	90	21	420	1.54	-3.86	0.52	12/14	5
Springhill	-	-	-	-	-	-	-	-	-	-	2.10	-2.96	1.50	12/4	3
Stonewall 5.3 NE	-	-	-	-	-	-	-	-	-	-	2.45	-	1.52	12/14	8
Taylorstown	-	-	-	-	-	-	-	-	-	-	1.49	-	0.44	12/14	9
Division	61.8	42.3	52.0	+3.6	85	23	434	84	27	675	1.58	-3.69	1.52		6
North Central Division															
Arcadia	-	-	-	-	-	-	-	-	-	-	1.41	-4.19	0.55	12/14	5
Bienville 3 NE	60.9	41.2	51.1	+2.9	80	21	442	84	18	300	1.39	-4.75	0.45	12/4	10
Calhoun 4.3 SSE	-	-	-	-	-	-	-	-	-	-	2.30	-3.57	0.70	12/2	9
Carlton 1.7 E	-	-	-	-	-	-	-	-	-	-	1.76	-	0.40	12/4	13
Columbia Lock	59.4	41.4	50.4	+1.6	81	22	457	90	13	144	2.11	-3.71	0.72	12/5	8
Homer 1 N	M	M	M	M	M	M	M	M	M	M	2.73	-3.19	1.44	12/2	10
Jamestown	-	-	-	-	-	-	-	-	-	-	1.73	-4.20	0.80	12/15	8
Jonesboro 3.8 ESE	-	-	-	-	-	-	-	-	-	-	2.78	-	M	M	M

* T – Temperature (°F) DFN - Departure from Normal P – Precipitation (in.) "-" indicates data not available "M" - missing observation(s)

December Monthly Station Temperature and Precipitation Summaries

North Central Division (cont.)															
Stations	Avg T-Max	Avg T-Min	T-Avg	T-Avg DFN	Highest T-Max	Lowest T-Min	HDD	HDD %Norm	CDD	CDD %Norm	Total Precip	Precip DFN	1-Day P-Max	P-Max Date	Rain Days
Monroe MLU AP	61.0	42.6	51.8	+3.0	81	22	420	82	21	300	1.13	-4.09	0.53	12/4	7
Monroe 26 N	59.5	38.4	49.0	+2.2	81	19	498	87	7	175	1.90	-3.94	1.00	12/1	5
Quitman 2.5 E	-	-	-	-	-	-	-	-	-	-	1.88	-	0.80	12/4	6
Rocky Branch 1.3 W	-	-	-	-	-	-	-	-	-	-	1.67	-	0.39	12/14	8
Ruston 5.4 ENE	-	-	-	-	-	-	-	-	-	-	1.59	-	0.31	12/14	7
Ruston 5.5 NNW	-	-	-	-	-	-	-	-	-	-	1.81	-3.94	0.61	12/2	8
Sikes 1.0 SW	-	-	-	-	-	-	-	-	-	-	2.16	-	1.37	12/4	6
West Monroe	-	-	-	-	-	-	-	-	-	-	0.89	-4.50	0.38	12/2	6
Division	60.2	40.9	50.6	+2.5	81	19	454	86	15	375	1.83	-3.78	1.44		8
Northeast Division															
FSA-St. Joseph 0.5 NNW	-	-	-	-	-	-	-	-	-	-	2.09	-	0.80	12/4	M
FSA-Tallulah 1.7 SSE	-	-	-	-	-	-	-	-	-	-	1.77	-	M	M	M
Oak Grove 1.9 E	-	-	-	-	-	-	-	-	-	-	1.20	-	0.27	12/5	10
Pioneer 0.3 WSW	-	-	-	-	-	-	-	-	-	-	1.56	-	0.31	12/5	10
Tallulah TVR AP	61.9	40.5	51.2	+1.5	80	21	437	90	16	145	1.70	-3.68	0.67	12/4	7
Winnsboro 5 SSE	61.5	38.9	50.2	+0.6	81	19	M	M	M	M	M	M	M	M	M
Division	61.7	39.7	50.7	+1.9	81	19	437	86	16	267	1.66	-3.90	0.80		9
West Central Division															
Anacoco 3.0 SW	-	-	-	-	-	-	-	-	-	-	3.01	-	1.25	12/4	8
Campti 0.6 SW	-	-	-	-	-	-	-	-	-	-	3.44	-	1.50	12/4	M
Campti 5.7 ENE	-	-	-	-	-	-	-	-	-	-	2.59	-	1.48	12/4	6
Goldonna 1.5 N	-	-	-	-	-	-	-	-	-	-	3.03	-	1.50	12/4	7
Leesville	65.2	42.4	53.8	+3.5	83	24	374	80	34	283	3.51	-2.12	1.99	12/4	9
Leesville 7.1 SSW	-	-	-	-	-	-	-	-	-	-	3.83	-	1.97	12/4	8
Natchitoches #2	62.5	40.8	51.7	+1.5	83	23	429	91	22	275	3.13	-2.14	1.25	12/4	8
Pitkin 6.6 WNW	-	-	-	-	-	-	-	-	-	-	3.81	-	2.00	12/4	5
Pleasant Hill 10.2 SE	-	-	-	-	-	-	-	-	-	-	2.45	-3.33	1.04	12/4	8
Toledo Bend Lake	65.5	42.8	54.2	+2.9	81	26	344	79	16	133	2.79	-2.99	0.99	12/4	9
Zwolle 2 NW	-	-	-	-	-	-	-	-	-	-	2.58	-3.11	0.86	12/5	6
Division	64.4	42.0	53.2	+3.0	83	23	382	82	24	343	3.11	-2.52	2.00		7
Central Division															
Alexandria	64.1	42.7	53.4	+3.0	82	24	M	M	M	M	2.04	-3.94	1.10	12/4	6
Alexandria 5 SSE	65.4	41.6	53.6	+3.0	82	24	M	M	M	M	2.81	-2.82	1.84	12/4	4
Alexandria AEX AP	63.7	43.3	53.5	+2.6	82	24	376	84	28	233	2.33	-2.95	1.18	12/4	10
Alexandria ESF AP	64.4	41.6	53.0	+2.9	83	23	391	83	27	245	2.39	-3.22	1.21	12/4	10
Beaver Fire Tower	-	-	-	-	-	-	-	-	-	-	6.07	+0.14	3.55	12/4	11
Boyce 3 WNW	60.9	39.5	50.2	+1.0	78	21	457	93	7	140	2.66	-3.37	1.25	12/4	11
Bunkie	64.4	43.3	53.9	+2.3	80	24	M	M	M	M	M	M	M	M	M
Colfax 7.2 NW	-	-	-	-	-	-	-	-	-	-	1.85	-	1.00	12/4	7

* T – Temperature (°F) DFN - Departure from Normal P – Precipitation (in.) "-" indicates data not available "M" - missing observation(s)

December Monthly Station Temperature and Precipitation Summaries

Central Division (cont.)															
Stations	Avg T-Max	Avg T-Min	T-Avg	T-Avg DFN	Highest T-Max	Lowest T-Min	HDD	HDD %Norm	CDD	CDD %Norm	Total Precip	Precip DFN	1-Day P-Max	P-Max Date	Rain Days
<i>FSA-Ferriday 1.0 WSW</i>	-	-	-	-	-	-	-	-	-	-	2.60	-	0.87	12/4	M
<i>Grand Coteau 2.7 E</i>	-	-	-	-	-	-	-	-	-	-	5.14	+0.07	2.98	12/4	9
<i>Hessmer 2.5 WSW</i>	-	-	-	-	-	-	-	-	-	-	3.47	-	1.99	12/4	7
<i>Jonesville Locks</i>	62.6	38.4	50.5	+1.5	81	26	M	M	M	M	M	M	M	M	M
<i>Pineville 0.4 NNW</i>	-	-	-	-	-	-	-	-	-	-	3.04	-	1.58	12/4	M
<i>Red River Lock #2</i>	-	-	-	-	-	-	-	-	-	-	2.56	-2.92	1.13	12/4	7
<i>Trout 4.4 WSW</i>	-	-	-	-	-	-	-	-	-	-	2.16	-	1.03	12/4	8
Division	63.6	41.5	52.6	+1.4	83	21	408	94	21	233	3.01	-2.58	3.55		8
East Central Division															
<i>Baton Rouge Metro AP</i>	66.8	44.6	55.7	+1.9	82	25	322	87	41	195	6.40	+1.08	4.69	12/4	14
<i>Baton Rouge 0.5 ESE</i>	-	-	-	-	-	-	-	-	-	-	7.70	-	3.25	12/5	13
<i>Baton Rouge 3.5 E</i>	-	-	-	-	-	-	-	-	-	-	7.65	-	2.44	12/5	13
<i>Baton Rouge 6.2 SSE</i>	-	-	-	-	-	-	-	-	-	-	6.47	-	2.39	12/4	12
<i>Central 2.2 SE</i>	-	-	-	-	-	-	-	-	-	-	6.81	+1.31	3.11	12/4	13
<i>Clinton 0.2 NNW</i>	-	-	-	-	-	-	-	-	-	-	7.46	-	2.86	12/4	10
<i>Covington 8 WNW</i>	66.9	43.6	55.3	+2.2	82	26	322	84	28	215	5.76	+0.83	3.01	12/5	8
<i>Denham Springs 6.8 N</i>	-	-	-	-	-	-	-	-	-	-	8.05	+2.29	3.69	12/5	12
<i>FSA-Amite City 0.8 SW</i>	-	-	-	-	-	-	-	-	-	-	7.48	-	5.06	12/4	M
<i>FSA-Franklinton 0.6 WSW</i>	-	-	-	-	-	-	-	-	-	-	4.32	-	M	M	M
<i>Jackson 3.6 NNE</i>	-	-	-	-	-	-	-	-	-	-	6.34	-	3.48	12/4	13
<i>Lacombe 1.4 N</i>	-	-	-	-	-	-	-	-	-	-	6.12	+0.85	3.05	12/5	13
<i>Livingston</i>	-	-	-	-	-	-	-	-	-	-	5.89	+0.23	2.67	12/5	8
<i>New Roads 5 NE</i>	66.6	45.4	56.0	+2.4	80	27	314	85	41	273	6.91	+1.57	5.00	12/4	9
<i>Ponchatoula 4 E</i>	-	-	-	-	-	-	-	-	-	-	6.15	+0.53	3.40	12/5	14
<i>Ponchatoula 5.3 W</i>	-	-	-	-	-	-	-	-	-	-	5.36	-	3.09	12/5	13
<i>Slidell</i>	66.2	45.1	55.6	+2.0	79	28	M	M	M	M	7.38	+2.43	3.25	12/5	11
<i>Slidell ASD AP</i>	65.8	44.0	54.9	+1.4	80	25	330	88	25	125	6.49	+2.00	3.92	12/4	12
<i>Slidell 4.4 E</i>	-	-	-	-	-	-	-	-	-	-	7.07	+2.23	3.24	12/5	13
<i>St. Francisville 1 NE</i>	64.7	41.6	53.2	+2.9	81	24	384	84	24	2400	8.13	-	5.47	12/4	12
<i>Wakefield 0.2 E</i>	-	-	-	-	-	-	-	-	-	-	6.33	-	3.85	12/4	13
Division	66.2	44.1	55.1	+2.5	82	24	334	84	32	229	6.68	+1.32	5.47		12
Southwest Division															
<i>Abbeville</i>	-	-	-	-	-	-	-	-	-	-	8.72	+4.27	3.29	12/5	10
<i>Branch 0.4 SSW</i>	-	-	-	-	-	-	-	-	-	-	5.06	-	2.84	12/4	9
<i>Crowley 2 NE</i>	-	-	-	-	-	-	-	-	-	-	6.42	+1.65	2.92	12/4	9
<i>FSA-De Ridder 0.9 E</i>	-	-	-	-	-	-	-	-	-	-	4.25	-	2.10	12/4	M

* T – Temperature (°F) DFN - Departure from Normal P – Precipitation (in.) "-" indicates data not available "M" - missing observation(s)

December Monthly Station Temperature and Precipitation Summaries

Southwest Division (cont.)															
Stations	Avg T-Max	Avg T-Min	T-Avg	T-Avg DFN	Highest T-Max	Lowest T-Min	HDD	HDD %Norm	CDD	CDD %Norm	Total Precip	Precip DFN	1-Day P-Max	P-Max Date	Rain Days
Jennings	64.4	45.0	54.7	+1.7	79	27	346	89	32	188	4.59	-0.15	2.30	12/4	12
Kaplan	-	-	-	-	-	-	-	-	-	-	8.10	+3.51	3.75	12/4	8
Lake Arthur 7 SW	64.1	48.0	56.0	+1.9	79	30	M	M	M	M	7.01	+2.23	3.80	12/4	11
Lake Charles Port	-	-	-	-	-	-	-	-	-	-	4.28	-0.81	1.27	12/4	13
Lake Charles LCHAP	66.9	46.3	56.6	+1.3	81	28	292	90	39	163	3.34	-1.22	1.07	12/4	10
Lake Charles 4.8 SSE	-	-	-	-	-	-	-	-	-	-	3.24	-	1.39	12/4	12
Leland Bowman Lock	65.3	48.4	56.8	+4.3	78	29	276	70	31	310	6.02	+1.65	2.37	12/4	8
Moss Bluff	-	-	-	-	-	-	-	-	-	-	4.63	-1.00	1.77	12/4	11
Moss Bluff 2 NNW	66.5	42.9	54.7	+1.7	82	25	349	90	37	218	3.92	-1.66	1.66	12/4	13
Oberlin Fire Tower	66.5	46.7	56.6	+5.3	80	26	M	M	M	M	5.51	0.00	3.10	12/4	9
Ragley 5.0 SE	-	-	-	-	-	-	-	-	-	-	6.70	+1.23	3.40	12/4	9
Rayne 1.0 W	-	-	-	-	-	-	-	-	-	-	5.96	-	2.68	12/4	11
Sulphur	-	-	-	-	-	-	-	-	-	-	3.32	-1.80	1.23	12/3	15
Sulphur 2.2 E	-	-	-	-	-	-	-	-	-	-	3.46	-1.58	1.39	12/4	13
Division	65.6	46.2	55.9	+2.1	82	25	316	88	35	250	5.25	+0.30	3.80		11
South Central Division															
Baldwin 1.8 N	-	-	-	-	-	-	-	-	-	-	7.52	-	4.17	12/5	M
Bayou Sorrel Lock	-	-	-	-	-	-	-	-	-	-	5.44	+0.74	2.80	12/5	9
Breaux Bridge 0.7 NNW	-	-	-	-	-	-	-	-	-	-	5.61	-	1.98	12/4	12
Carencro	-	-	-	-	-	-	-	-	-	-	5.17	+0.04	2.45	12/4	11
Carville 2 SW	66.5	47.5	57.0	+2.5	80	28	278	82	38	253	3.74	-1.27	2.15	12/4	10
Donaldsonville 4 SW	66.5	45.4	56.0	+1.9	82	26	311	86	37	176	5.96	+1.10	4.26	12/5	11
Jeanerette 5 NW	66.0	45.0	55.5	+1.9	79	26	314	85	30	167	6.52	+1.78	3.56	12/5	10
Lafayette LFT AP	67.1	46.4	56.8	+1.9	82	26	300	88	52	208	7.58	+2.62	4.87	12/4	12
Lafayette 2.9 ENE	-	-	-	-	-	-	-	-	-	-	6.56	-	2.68	12/4	M
New Iberia ARA AP	67.1	45.2	56.2	+1.2	81	26	307	91	39	150	5.38	+0.89	3.80	12/4	10
Plaquemine 2 N	-	-	-	-	-	-	-	-	-	-	6.37	+1.54	1.95	12/5	14
St. Gabriel 2.8 NNW	-	-	-	-	-	-	-	-	-	-	6.44	-	2.29	12/5	14
St. Martinville 0.2 S	-	-	-	-	-	-	-	-	-	-	7.19	+2.35	3.14	12/5	11
Division	66.6	45.9	56.3	+1.6	82	26	302	89	39	205	6.11	+1.38	4.87		11
Southeast Division															
Belle Chasse 1.6 NNE	-	-	-	-	-	-	-	-	-	-	5.91	-	3.29	12/2	10
Dutchtown #2	-	-	-	-	-	-	-	-	-	-	5.50	-0.37	2.51	12/5	12
Houma 4.1 ENE	-	-	-	-	-	-	-	-	-	-	3.94	-	2.15	12/5	9
NO-Armstrong AP	67.0	49.0	58.0	+1.4	82	30	257	88	48	160	4.29	-0.53	3.70	12/4	9
NO-Lakefront AP	65.4	50.2	57.8	+1.3	80	33	253	88	37	176	4.46	-0.17	2.84	12/4	14

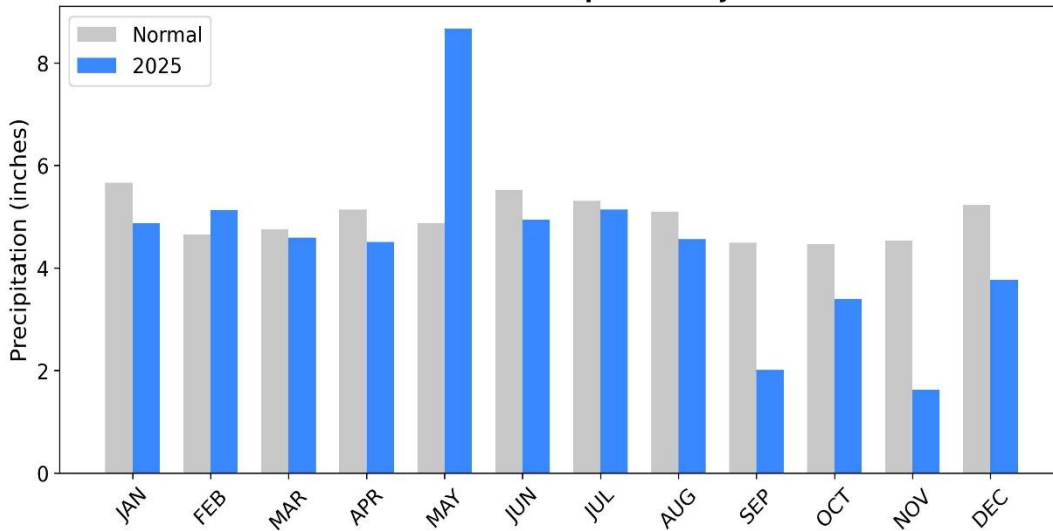
* T – Temperature (°F) DFN - Departure from Normal P – Precipitation (in.) "-" indicates data not available "M" - missing observation(s)

December Monthly Station Temperature and Precipitation Summaries

<i>Southeast Division (cont.)</i>															
Stations	Avg T-Max	Avg T-Min	T-Avg	T-Avg DFN	Highest T-Max	Lowest T-Min	HDD	HDD %Norm	CDD	CDD %Norm	Total Precip	Precip DFN	1-Day P-Max	P-Max Date	Rain Days
<i>New Orleans 2.8 E</i>	-	-	-	-	-	-	-	-	-	-	4.86	-	2.20	12/2	8
<i>Metairie 2.8 ENE</i>	-	-	-	-	-	-	-	-	-	-	4.82	-	2.69	12/5	11
<i>Raceland 2.1 WSW</i>	-	-	-	-	-	-	-	-	-	-	5.97	-	2.46	12/5	9
<i>St. Amant 3.3 N</i>	-	-	-	-	-	-	-	-	-	-	4.77	-	2.60	12/5	11
<i>St. Rose 0.3 W</i>	-	-	-	-	-	-	-	-	-	-	4.00	-	2.20	12/5	8
<i>Thibodaux 4 SE</i>	66.3	47.0	56.7	+0.3	82	26	286	96	34	110	3.85	-1.40	2.68	12/5	8
<i>Westwego 2.4 ENE</i>	-	-	-	-	-	-	-	-	-	-	3.70	-	1.61	12/4	10
Division	66.2	48.7	57.5	+1.3	82	26	265	88	40	160	4.67	+0.17	3.70		10

* T – Temperature (°F) DFN - Departure from Normal P – Precipitation (in.) "-" indicates data not available "M" - missing observation(s)

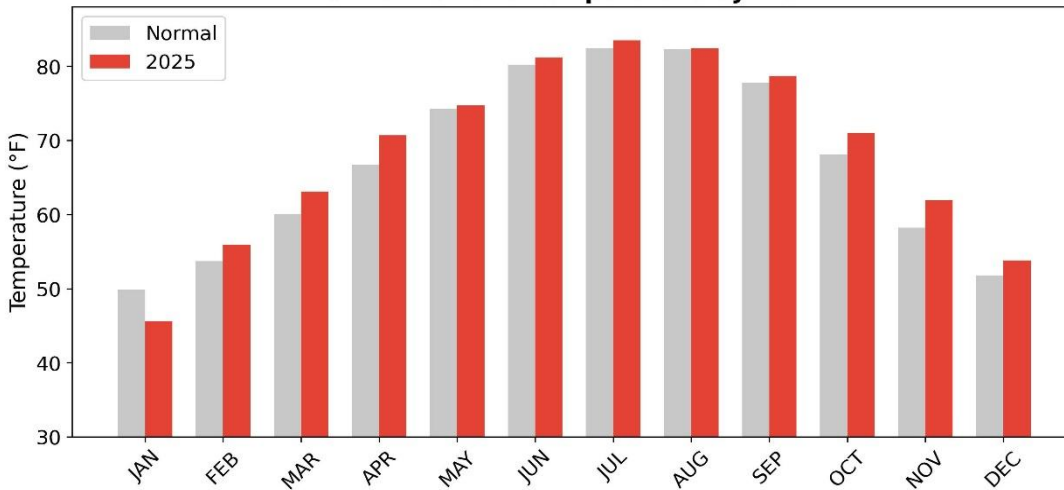
Normal vs 2025 Precipitation by Month



Note that monthly statewide-averaged rainfall has been significantly below-normal over the past four months, accounting for the drought conditions impacting much of Louisiana as we close-out 2025.

Statewide-averaged rainfall was near-normal to below-normal for 11 of 12 months during 2025.

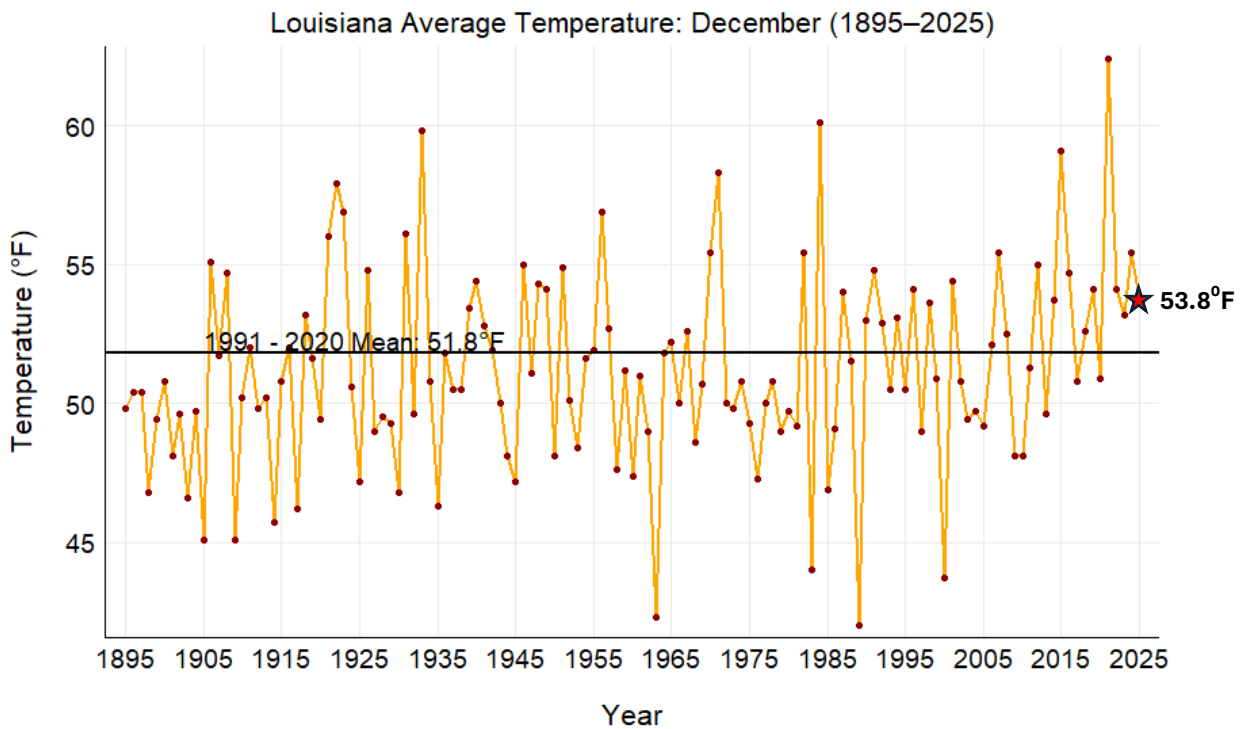
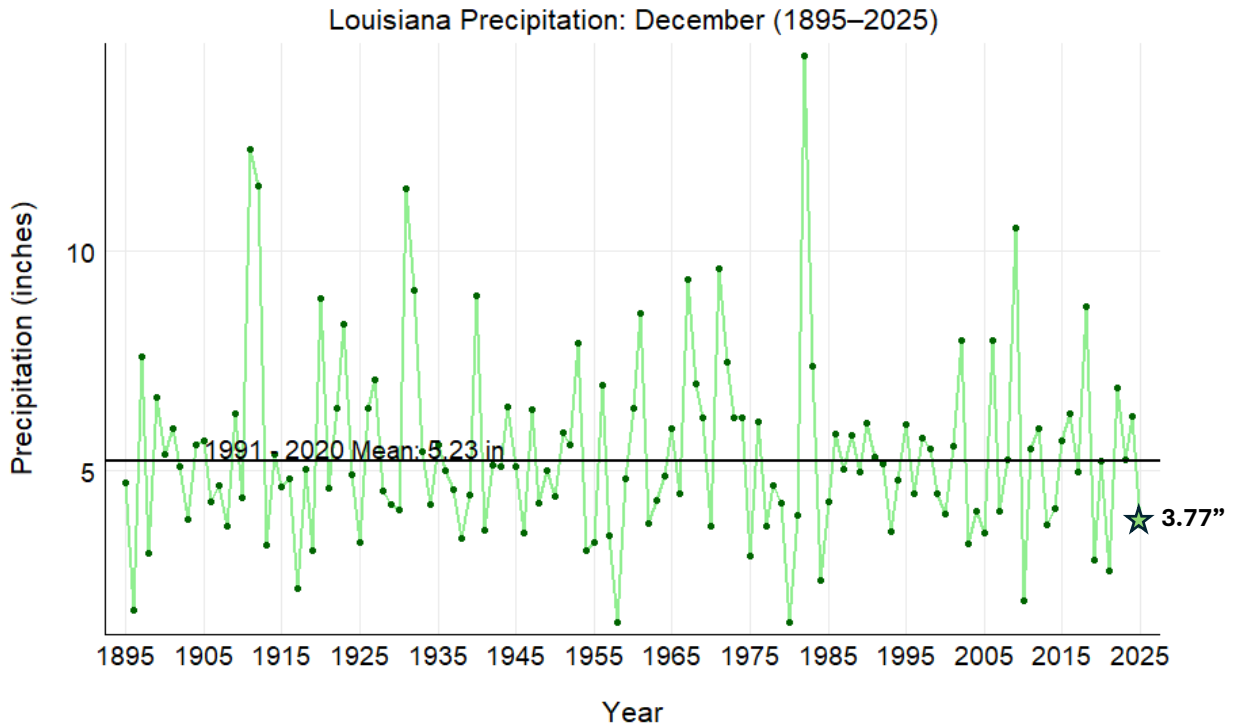
Normal vs 2025 Temperature by Month



Louisiana’s “warm” trend over the past 40+ years appears to be continuing: monthly-averaged statewide temperatures were near-normal to above-normal for 11 of 12 months during 2025.

Note that the statewide average temperature for the last quarter of 2025 (Oct-Nov-Dec) ranks among the top ten “warmest” based on NCEI* data back to 1895.

NCEI* - NOAA/National Centers for Environmental Information



☆ Preliminary Data

Precipitation and temperature data in this report are primarily retrieved through the ACIS QueryBuilder (rcc-acis.org) and the cli-MATE platform (MRCC Application Tools Environment), both of which are maintained by the NOAA Regional Climate Centers (RCCs). Drought data are sourced from the U.S. Drought Monitor (unl.edu), the LSU AgCenter, and the Louisiana Dept. of Agriculture & Forestry.